



## FALL 2024 RIVERBED HOMELESSNESS CENSUS: City of San Diego

By The San Diego River Park Foundation

Census September 26-29, 2024

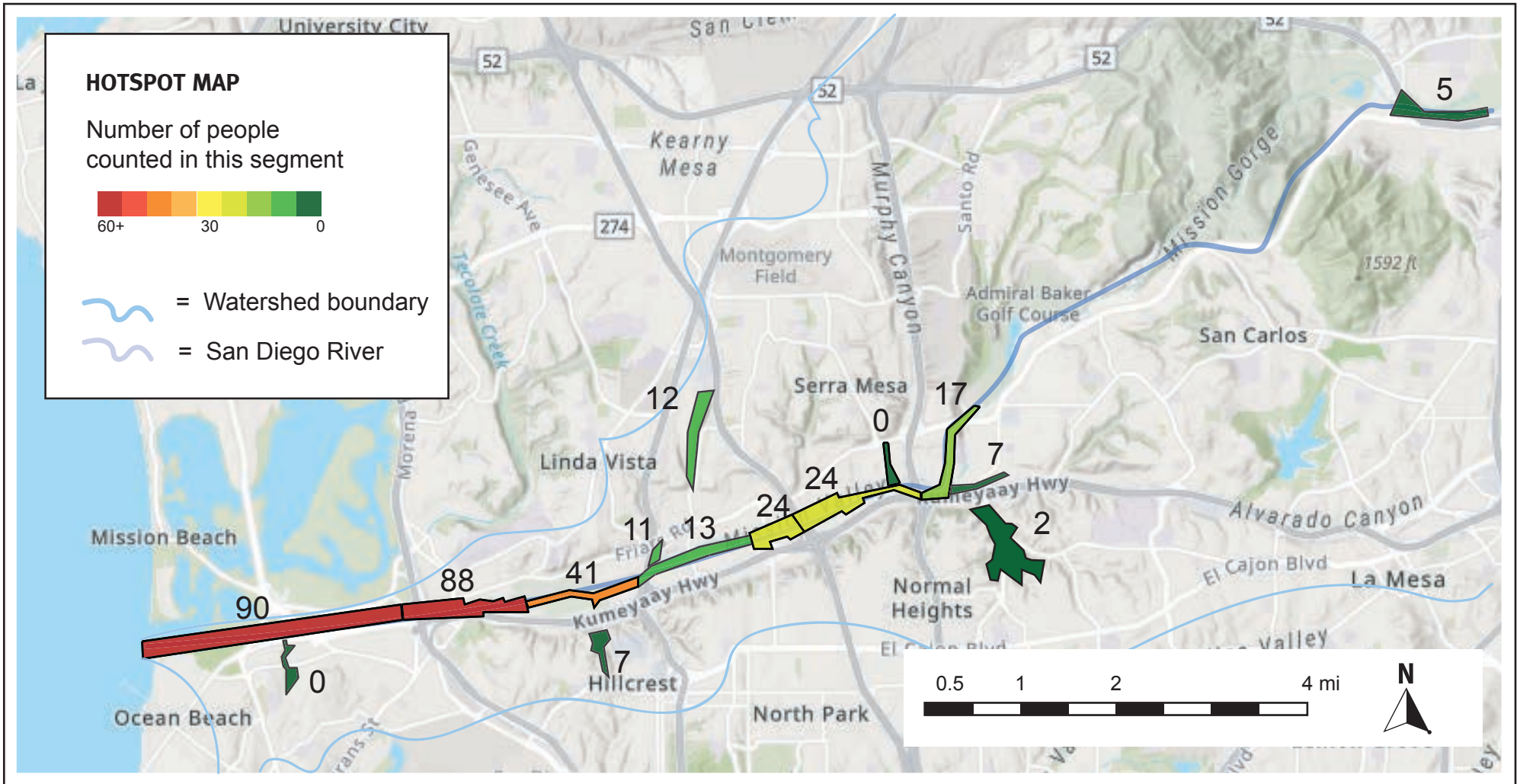
Contact: [info@sandiegoriver.org](mailto:info@sandiegoriver.org) or (619) 297-7380

### HOMELESSNESS CENSUS

The San Diego River Park Foundation coordinates volunteers to document people experiencing homelessness in the San Diego Riverbed. During the spring census, SDRPF volunteers conducted field surveys on foot over 4 consecutive mornings of Sept. 26-29 in the segments below. Volunteers were trained to document hand-built structures, individuals, and inhabited vehicles. The below numbers report only inhabited vehicles parked within naturalized areas, not adjacent parking lots or streets. This survey included some tributary areas. These are the results:

	Hand-Built Structures	Individuals	Inhabited Vehicles	Estimated* Total People
City of San Diego: standard areas	111	39	33	300
City of San Diego: new tributary areas	17	8	0	38
<b>TOTAL</b>	<b>128</b>	<b>47</b>	<b>33</b>	<b>338</b>

*\*based on the most recent Regional Task Force on Homelessness multipliers (2018): x1.75 for hand-built structures and x2.03 for inhabited vehicles*



### TRENDS OVER TIME

Total people experiencing homelessness in the San Diego Riverbed by shelter type in the City of San Diego (trend analysis excludes canyons because surveys there started in 2021)

