

LOWER SAN DIEGO RIVER WATER QUALITY 2013

Water Quality Monitoring Report Appendices sA-sF



Site 8 - Old Mission Dam

Supporting Water Quality Monitoring Data for the Lower San Diego River

John C. Kennedy, PE

November 2013

Lower San Diego River Water Quality - 2013

Table of Contents (WQM Report - separate document)

Section 1. Introduction

Section 2. LSDR Spatial Water Quality WY13/12

Section 3. LSDR Temporal Water Quality WY13/12

Section 4. WY13 WQIndex Compared to Prior Years

WY13 WQM Report Supplemental Appendices Table of Contents

E. SD RiverWatch WQ Monitoring Program	pg E1-E4
Table E.1 LSDR Sections, Reaches and Monitoring Sites	
Table E.2 - LSDR WQM Site Information	
Table E.3 - LSDR Water Quality Monitoring Parameters	
Figure E.1 - Lower San Diego River Catchment and WQM Sites	
F. LSD River Hydrology and Water Quality	pg F1-F3
Table F.1 - Lower SDR Average Daily Flows (WY05-WY13)	
Table F.2 - Rainfall and Long-Term Average Daily Flow (1914-2013)	
Table F.3 - Annual Rainfall and Average Daily Flow (WY05-WY13)	
Charts F.1 - B.3 LSDR Hydrologic Data	
G. 2013 Monthly WQM Data by Site	pg G1-G7
Table G.1 West, Mid & East Section Water Temperature	
Table G.2 West, Mid & East Section pH	
Table G.3 West, Mid & East Section Specific Conductivity	
Table G.4 West, Mid & East Section Dissolved Oxygen Concentration	
Table G.5 West, Mid & East Section DO as Percent of Saturation	
H. 2013 Monthly WQ Data (by Others)	pg H1-H2
Table H.1 USGS San Diego River Stream Flow	
Table H.2 SDCW San Diego River Coliform Bacteria Counts	
I. Water Quality Indexing and WQIs by River Site	pg I1-I2
Table I.1 WY13 WQI Values by WQM Site - West Section	
Table I.2 WY13 WQI Values by LSDR WQM Site - Mid & East Sections	
J. WQM Data Summary (WY05-WY13)	pg J1-J2
Table J.1 WQM Data Summary (Annual & Seasonal Averages)	
Table J.2 WQM Data Summary (9-Yr Spatial Averages)	
Charts J.1-J.3	

Questions regarding the San Diego River WQM database or interpretation of results expressed in these appendices can be directed to the attention of the report's author, John C. Kennedy, through contacting SDRPF at info@SanDiegoRiver.org, or the RiverWatch Coordinator at 619-297-7380.

Appendix E - San Diego RiverWatch WQ Monitoring Program

Appendix E provides an overview of SDRPF's RiverWatch water quality monitoring (WQM) program that, over the past 9 years, has been continuously engaged in collecting and evaluating data pertaining to the Lower San Diego River (LSDR) watershed on a monthly basis.

Monitoring Period & Coverage: Monthly monitoring over past 9 years (Oct. 2004 – Nov. 2013) covering the Lower San Diego River and its tributaries extending downstream from Lakeside (river mile 19.8 elev. 340 ft amsl) to the Estuary (river mile 2.96, elev. 4.8 ft amsl) between the I-5/Pacific Hwy. overpasses. The LSDR watershed and monitoring sites are shown on **Figure E.1**.

Monitoring Sites: 15 total - 12 on main course (Mission Valley Section - sites 1-7, Mission Gorge Section - sites 8-10, Santee Basin Section - sites 11-15) plus three tributary stream sites are listed in **Table E.1**. Site locations, river milage, bed elevations and coordinates are provided in **Table E.2**.

Table E.1 LSDR Sections, Reaches and Monitoring Sites

Section/Reach/Tributary	Site #	Comments
Estuary Entrance	1E/1W	Tidal Influence at transition from river to SDR Estuary
Lower Mission Valley (LMV)	2E/W, 3 & 4	4 miles of lower river extending to I-805
Upper Mission Valley (UMV)	5,6 & 7	4-mile stretch from I-805 to Princes View Dr
Mission Valley (West Sites)	1-7	8-mile western portion through Mission Valley
Mid-Section Mission Gorge (MG)	8,9 & 10	5-mile mid-section, Princess View Dr to Kumeyaay Lk
Lower Santee Basin (LSB)	11,12&15	2-mile stretch from Kumeyaay Lk to Carlton Hills Blvd
Upper Santee Basin (USB)	13 & 14	3-mile stretch from Carlton Hills Blvd to Riverford Rd
Santee Basin (SB)	11-15	5-mile eastern section from Kumeyaay Lk to Lakeside
Eastern Portions (East Sites)	8 -15	10-mile eastern/upper 3 reaches (2 sections)
Tributaries:		
Murphy Canyon/Qualcom ^{a)}	5a	Enters LSDR southwest of Qualcomm Stadium
Jackson Dr/Birchcreek Outfall ^{b)}	9	Enters LSDR at Sycott Wash (d/s of Site 8)
Santee Lakes/E. Sycamore Cnyn Creek	12	Enters LSDR d/s of Carlton Oaks GC (u/s of Site 11)
Forester Creek ^{c)}	15	Enters LSDR at Carlton Oaks GC (u/s of Site 12)
Lower SDR Watershed (LSDR)	1-15	Weighted average of all 5 reaches or all 3 sections

(a) Monthly monitoring discontinued in WY07; nearby Ward Rd bridge site renumbered as 5.

(b) Monthly monitoring initiated in 2008; site also termed Jackson Dr. Outfall (OF).

(c) Monthly monitoring initiated in 2007 with adjusted site location in 2009.

WQ Parameters: Seven measured and recorded parameters (Temp, pH, SC, DO, DO%Sat, NO₃ & PO₄) plus subjective field observations re: environs and characteristics are listed in **Table E.3**. As nutrient testing for NO₃ and PO₄ is carried out at five selected sites; two in West (2 & 6) and three in East (11,14 & 15), respectively, results are not used in performing statistical analyses regarding reaches/sections of the river. Number of datum for each of the five physical-chemical parameters monitored monthly at each site over the 9-yr period (Oct. 04 - Oct. 13) are in the range of 80 to 95. Two other water quality parameters monitored by others at several sites, streamflow from USGS (Poway Office) and coliform counts from SDCoastKeeper, are also recorded for purposes of determining the water quality index.

Table E.2 - LSDR WQM Site Information

Site #	Site Name	u/s mi.	Elev. ft	Location	GIS Coordinates LatitudeLongitude	
LMV - Lower Reach W. Mission Valley: I-5 Bridge to I-805 Bridge (Sites 1-4)						
1	Estuary W/E	2.96	6	Between PC Hwy & I-5 on encased sewer main	32.76131	-117.2037
2	River Gardens E/W	3.50	11	W. of YMCA, d/s of Trolly overpass at riffle	32.76230	-117.1944
3	Fashion Valley Mall W	5.08	22	below Town & Country Pedestrian Bridge	32.76517	-117.1687
4	FSDRIP	5.98	36	N. of Mimi's Cafe on Mission Center Rd Bridge	32.76986	-117.1548
UMV - Upper Reach E. Mission Valley: I-805 Bridge to North end of Admiral Baker Field (Sites 5-7)						
5	Ward Rd Bridge	8.89	50	S. of Trolly overpass at Del Rio S intersection	32.78024	-117.1103
6	Kaiser Ponds	9.46	56	E. of Mission SD de Acala at SD Mission Rd	32.78406	-117.1042
7	Admiral Baker Field	9.98	58	L - Lower (below Friars Rd bridge)	32.79038	-117.1031
	ABF - Zion	10.2	62	Z - Terminus of Zion Ave at Riverdale St	32.79304	-117.0998
West (MV) - Mission Valley Section: Estuary to Admiral Baker Field (Sites 1-7) [LMV+UMV]						
MG - Mission Gorge Reach: Quarry Area to Old Mission Dam (Sites 8-10)						
8	Mission Trails at Jackson Dr	13.8	159	at SDCWA down stream of Scycott Crossing	32.82124	-117.0621
9	Jackson Dr/Birchcreek OF	13.9	198	San Marcos area tributary by Jackson Dr. Trail	32.82268	-117.0622
10	Old Mission Dam W/E	15.7	265	Downstream side of Old Mission Dam	32.83977	-117.0433
Mid-Section (MG) - Mission Gorge Section: Quarry Area to Old Mission Dam (Sites 8-10)						
LSB - Lower Reach Santee Basin: W. Hills Pkwy to Carlton Hills Blvd Bridge (Sites 11,12 &15)						
11	West Hills Pkwy	17	300	at/below West Hills Pkwy Bridge	32.83936	-117.0244
12	Carlton Oaks Dr/Santee	18.2	320	Sycamore Ck/Santee Lakes at Carlton Oaks Dr.	32.84431	-117.0064
15	Forester Creek	18.9	336	Forester Ck (tributary) at Prospect Ave.	32.83221	-116.9866
USB - Upper Reach Santee Basin: Carlton Hills Blvd Bridge to Riverford Rd (Sites 13-14)						
13	Mast Park	18.50	330	Pedestrian Bridge behind (N of) Walmart	32.84696	-116.9734
14	Cottonwood Ave/RCP	19.8	340	W of RCP plant at Chubb Ln/ Cottonwood Ave	32.84434	-116.9895
East (SB) - Santee Basin Section: West Hills Parkway to Lakeside (Sites 11-15 above) [LSB+USB]						
LSDR - Lower San Diego River Watershed: SD Estuary to Lakeside (Sites 1-15 above) [MV2+MG+SB]						

Reaches (5) - averaged values for combination of adjacent sites excluding tributaries within identified portions of river (LMV, UMV, MG, LSB, USB) .

Sections (3) - averaged values for adjacent reaches (MV = LMV+UMV, MG = MG, SB = LSB+USB)

Tributaries (3) – sites located on small creeks/drainages tributary to main stream watercourse.

LSDR – computed values for entire lower watershed (distance-weighted average of all 5 reaches or all 3 sections); average (LMV+UMV+MG+SB) or average (MV2+MG+SB).

Protocol: East Side – (Santee Basin & Mission Gorge Sections). The 8 sites within upper three reaches (MG, LSB & USB) typically monitored 3rd Fri. or Sat. of month. West Side - (Mission Valley Section). Seven sites within the lower two reaches (LMV & UMV) monitored monthly, typically 3rd Sun. of month.

Table E.3 - LSDR Water Quality Monitoring Parameters

WQ Parameter	unit	Comments
<i>Measured monthly at all sites:</i>		
1. Temperature (Temp)	oC	Basic characteristic and WQ driver (Table C.1)
2. pH	-	Degree of acidity (<7.0) or alkalinity (>7.0) (Table C.3)
3. Specific Conductivity (SC)	mS/cm	Measure of ionic content or dissolved solids (Table C.2)
4. Dissolved Oxygen (DO)	mg/L	Good indicator of relative water quality (Table C.4)
5. Percent of DO Saturation (DO%Sat)	%	Good indicator of general water quality (Table C.5)
<i>Sampled/tested monthly at selected sites: (typically 5 - 3 East & 2 West)</i>		
6. Nitrate (NO ₃ -N)	mg/L	Important nutrient for biological activity
7. Phosphate (PO ₄ -P)	mg/L	Key nutrient for biological activity
<i>Discontinued on regular basis in 2006:</i>		
8. Turbidity	NTU	Discontinued due to inaccurate/invalid readings
9. Barometric Pressure	mBars	Suspended readings as external data readily available
<i>Environmental Observations recorded at all sites:</i>		
Atypical or notable conditions (scum, discoloration, odors, etc.), trash/debris, homeless encampments, biological activity (aquatic, avian, terrestrial), expansion of invasive species, erosion, scouring, other noteworthy comments re: watercourse, shoreline and adjacent environs.		
<i>General WQ Conditions observed at all sites: (numerical coding added in 2010)</i>		
Weather Condition, Presence of Algae, Clarity, Color, Odor, Flow, Foam, Litter, Odor, Oil and Grease (O&G)		
<i>Parameters measured by others at selected sites</i>		
10. Coliform counts	MPN/ 100mL	SDCoastKeeper data taken at Fashion Valley Rd and Old Mission Dam monitoring sites (Table H.2)
11. Stream Flow	cfs	USGS gauging stations at Fashion Valley and Mast Rd near Santee (Table H.1)

Team Leaders and multiple citizen volunteers (typically 3-8 persons) meet at an appointed site, organize field equipment/transportation, drive to sites, measure physical-chemical water quality using Sonde instrument, note special conditions/observations, collect samples for subsequent testing, return to office, perform nutrient (NO₃ & PO₄) tests, store samples for subsequent laboratory (e.g., sediment toxicity) analyses and clean/check-in/store field equipment.

Data Management: Water quality data are typically managed in a three-step process.

1. *Raw* (source) data - each site, several of which have two monitoring locations (e.g. upstream/downstream of dam, riffle or crossing), date/time, measured WQ parameters, and non-quantifiable supporting observations and comments.
2. *Compiled* (vetted/proofed) data - provided on Ecolayers w/date, site location, parameter value and additional observations of interest.
3. *Processed* (formatted/aggregated) data - with statistical computations associated with LSDR sites, reaches, sections and tributaries for each WQ parameter of interest including those monitored by others.

Statistical Computations: Various basic statistical values have been calculated from the data.

- Mean – average of a series (sum of values divided by number of values)
- Median – middle value of an ordered series (50% larger - 50% smaller)
- Minimum – lowest or smallest value measured
- Maximum – highest or greatest value measured
- Range – Difference between maximum and minimum values
- 1st Quartile (Q1) – 25% of values smaller - 75% larger
- 2nd Quartile (Q2) – 50% of values larger - 50% smaller (same as median value)
- 3rd Quartile (Q3) – 75% of values smaller - 25% larger
- Variance – sum of the squares of deviation from the mean or average value
- Standard Deviation (SD) – square root of the variance
- Skew – third moment about the mean divided by the standard deviation (SD)
- Coefficient of Variance (CoV)– Variance divided by the mean
- Trend line - Moving average value taken over 12 month period

Figure E.1 - Lower San Diego River Catchment and WQM Sites



Color Code for LSDR reaches on figure above: Estuary (orange), LMV (purple), UMV (red), MG (dark green), LSB (violet), USB (dark blue), Lakeside (light green), tributaries (light blue). Figure details can be downloaded through Google Earth from SDRPF website/River Monitoring page: file <Fig1.1WQMR.kmz>

Appendix F - LSDR Hydrology and Water Quality

Stream flow or discharge, the volume of water moving past a designated location over a fixed period of time, is a primary driver of changes in water quality. Flow, often expressed as cubic feet per second (cfs) or million gallons per day (mgd), constitutes the amount of water moving off a watershed into a watercourse, as affected by weather (increasing during rainstorms and decreasing during dry spells) and changing during different seasons. Flow decreases during summer months when rainfall is minimal, evaporation rates high and actively growing riparian vegetation extracts water from the ground. August and September are typically months of lowest flow. A function of both volume and velocity, stream flow has a major impact on living organisms, watercourse habitats and on overall water quality. Velocity of flow, typically increasing as volume increases, determines the kinds of organisms that live in the system and also affects the amount of silt and sediment that's transported. Fast moving watercourses usually contain higher levels of DO than slow streams, as they are better aerated.

LSDR average daily flow (ADF) values as recorded at the two USGS gauging stations in the lower watershed are expressed in **Table F.1** for both the monitoring period (Oct 2004 - Oct 2013) and the past 48 years (1965-2013) of official records. The two averages are in close accord for both stations.

Table F.1 - Lower SDR Average Daily Flows (WY05-WY13)

Season Units ^(b)	West - Mission Valley		East - Santee Basin		LSDR ^(a)	
	cfs	mgd	cfs	mgd	cfs	mgd
Fall (Oct/Nov)	20.7	13	13.1	8.5	17	11
Winter (Dec-Mar)	83.6	54	45.9	30	65	42
Spring (April/May)	18.7	12	12.2	8	15.5	10
Summer (June-Sept)	2.3	1.5	1.7	1.1	2.0	1.3
9-Yr Annual Avg. (2005-2013)	35.2	23	20.1	13	27.6	18
48-Yr Annual Avg. (1965-2013)	36.3	23.5	21.7	14	29.0	18.7
Total Annual Discharge, AF ^(c)	25,760/26,320		14,560/15,680		20,165/20,940	

(a) Lower San Diego River average daily flow represents a mean hydrologic condition based on averaging the two USGS gauging station stream flow values.

(b) ADF values are expressed in both cubic feet per second (cfs) and million gallons per day (mgd); 1 mgd = 1.547 cfs

(c) Annual discharge volume expressed in acre-feet (1 AF = 325,900 gallons); 9- and 48-Yr averages.

Correlations between total annual rainfall and ADF considered over the past 99 years of hydrologic record and during the period of SDRPF RiverWatch monitoring for the two lower SDR gauging stations are presented in **Tables F.2 and F.3**, respectively. WY05 was a "Very Wet" hydrologic year, whereas WY07 was "Very Dry". WY06 & 08 were both "Dry" years while WY09 & 10 were considered "Normal" in terms of both total annual rainfall and average daily flow. The 9-yr ADF in the East and West is 21 and 37 cfs, respectively; both values are approximately the same as the past 45- as well as 99-yr SDR average daily discharges.

Monthly discharge data (min, max and average daily flow) at the two gauging stations extending from Oct 2004 through Oct 2013 are presented in **Chart F.1**. Average daily flow (ADF) for the lower San Diego River varies from less than 1 cfs (0.6 mgd) during the summer (dry) months to nearly 200 cfs (130 mgd) during some winter (wet) seasons in the East (Santee Basin) and up to 380 cfs (246 mgd) in the West (Mission Valley) section. ADF values have been trending upward since WY07 as shown by the 12-month moving average.

Table F.2 - Rainfall and Long-Term Average Daily Flow (1914-2013)

Type	# of Years	Percent of Total Years		Total Annual Rainfall ^(a)			Average Daily Flow, mgd		
				inches	mm	Avg., mm	East (b)	West (c)	LSDR
Very Wet	3	3%	30%	>20	>500	580	68	113	92
Wet	10	10%		15-20	380-499	430	48	81	66
Above Norm ^(d)	17	17%		12-15	300-379	340	26	44	35
Normal	38	39%	39%	8-12	200-299	245	10	18	15
Dry	25	26%	31%	5-8	125-199	160	7	12	10
Very Dry	5	5%		<5	<125	100	5	9	7
Annual Avg.	99	100%		10.2		260	18	28	23

a) Total annual rainfall from 1 October through September 31.

b) Santee Basin USGS Stream Gauge Station # 11022480 at Mast Road

c) Mission Valley USGS Stream Gauge Station # 11023000 at Fashion Valley Mall; incomplete data prior to 1968.

d) Above normal annual rainfall (12-15 in/yr) resulting in LSDR average daily flows from 15 to 50 mgd.

Table F.3 - Annual Rainfall and Average Daily Flow (WY05-WY13)

(Type of Year)	Annual Rainfall		Variance ^(a)	ADF, mgd			Variance ^(d)
	mm	inches		East ^(b)	West ^(c)	LSDR	
WY05 (Very Wet)	571	22.49	124%	32.9	64.8	49	137%
WY06 (Dry)	154	6.06	-39%	6.9	11.3	9	-57%
WY07 (Very Dry)	98	3.85	-61%	4.6	8.3	6	-71%
WY08 (Dry)	184	7.25	-28%	8.6	16.1	12	-42%
WY09 (Below Normal)	232	9.15	-9%	9.7	17.6	14	-32%
WY10 (Normal)	268	10.55	6%	16.2	27.5	22	6%
WY11 (Above Normal)	321	12.62	26%	25.1	39.9	33	59%
WY12 (Dry)	204	8.03	-20%	7.4	12.3	10	-52%
WY13 (Dry)	169	6.65	-33%	5.2	6.8	6	-71%
9-Yr Average (05-13)	245	9.63	-4%	13.0	24.7	19	-8%
30-Yr Norm ('83-13)	250	9.85	-2%	16.1	25.2	21	0%
99-Yr Average ('14-13)	254	10.0	0%	18	28	23	11%

(a) Percent difference from long term average annual rainfall (254 mm/yr or 10.0 in/yr); black-above, red-below average.

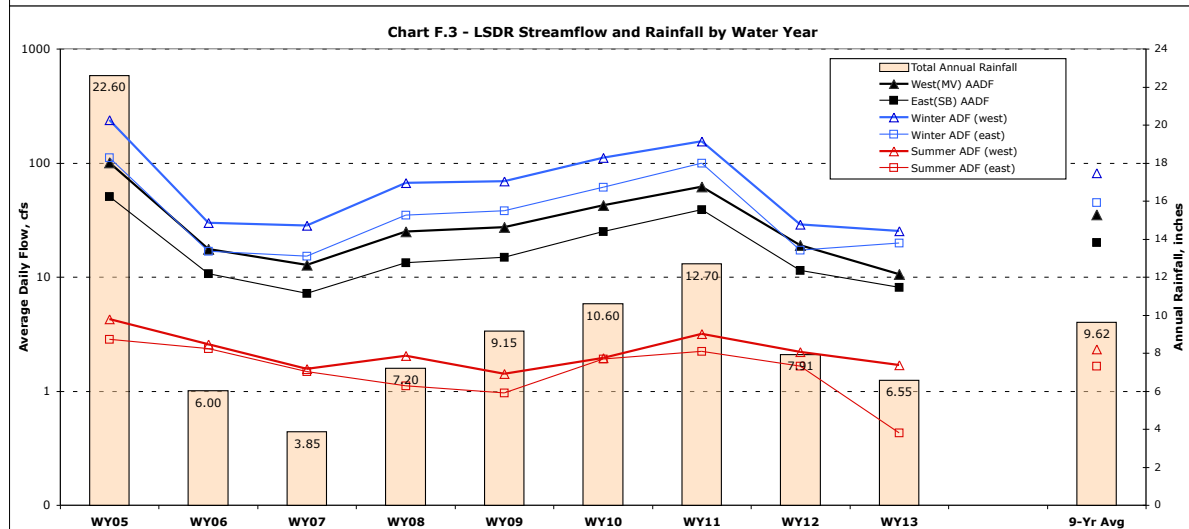
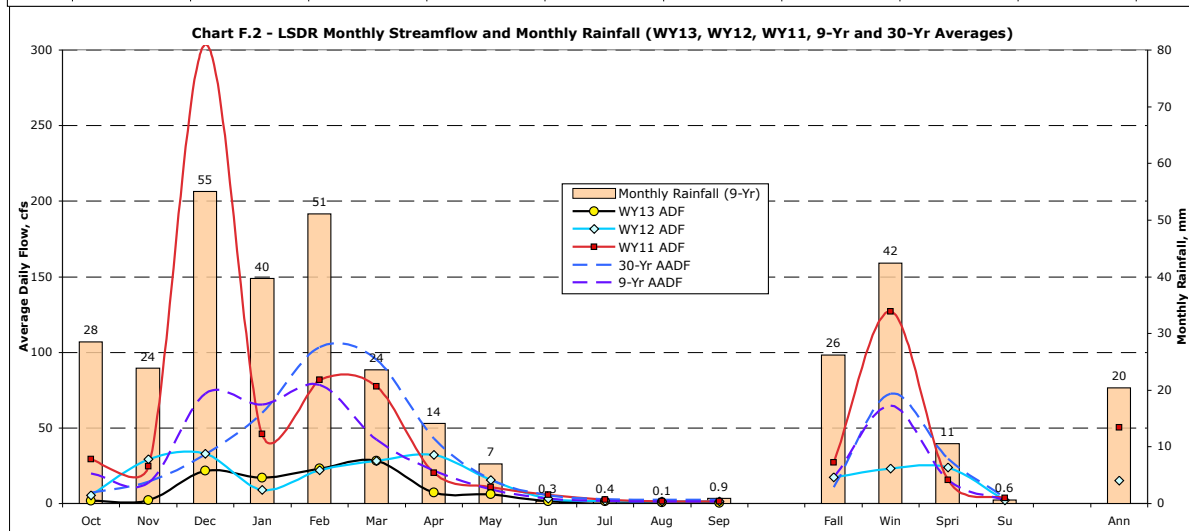
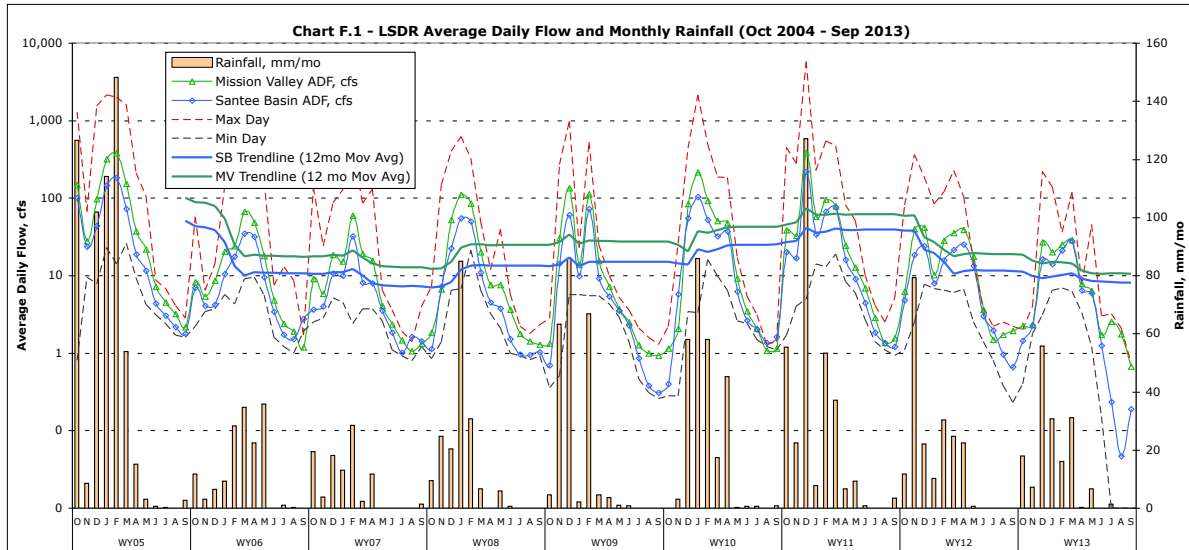
b) Santee Basin USGS Stream Gauge Station at Mast Rd.

c) USGS Stream Gauge Station at Fashion Valley Mall; incomplete data prior to 1965.

d) Percent difference from 30-Yr average annual daily flow (i.e., 21 mgd).

Monthly and seasonal average annual flows and rainfall over the monitoring period for both stations are shown in **Chart F.2**. The seasonal flow patterns describe range, variance and correlation in monthly ADF and rainfall over the past 9 years. Winter season streamflow within the lower watershed is 100-to-250 times greater than summer, dry season flow. Average annual, winter and summer flows and rainfall for each of the water years are presented in **Chart F.3**. Highest flows during the monitoring period at both gauging stations were recorded in WY05 (very wet year); the lowest in WY07 (very dry year). Water years (WY06&08) witnessed below normal rainfall and runoff/streamflow. WY10 witnessed near normal

rainfall and river discharge. WY11 was an above normal year whereas WY12 and WY13 were both below normal in terms of total annual rainfall and average daily stream flow.



Appendix G - LSDR Monthly WQM Site Data

Table G.1(W) West Section Water Temperatures (WY13/WY12)

Site #	1	2	3	4	5	6	7
Reach	Lower Mission Valley				Upper Mission Valley		
Oct	20.4/20.1	20.8/19.6	20.9/20.0	21.5/20.8	19.2/18.9	20.4/20.2	20.0/19.7
Nov	16.4/18.2	16.2/15.6	17.0/15.9	16.8/15.5	15.0/14.8	15.4/15.0	14.7/15.1
Dec	12.0/16.9	12.2/11.4	12.7/11.1	11.4/11.2	11.4/10.8	11.7/10.8	11.4/11.1
Jan	10.5/12.3	10.5/12.5	10.4/12.5	10.2/12.2	9.5/11.2	9.8/11.8	9.6/11.5
Feb	13.6/14.1	13.3/13.6	13.4/13.7	13.5/13.6	12.3/13.0	12.8/13.2	12.3/13.1
Mar	17.1/13.8	17.3/13.4	17.3/13.4	17.3/13.4	16.4/13.0	17.2/12.9	17.1/12.0
Apr	19.6/19.7	19.1/20.0	19.4/20.2	19.3/20.0	17.8/19.4	18.8/20.0	18.1/20.0
May	23.0/22.6	22.2/22.6	22.5/22.7	19.3/23.1	20.2/21.4	21.9/22.3	21.2/21.7
Jun	22.0/24.0	22.8/23.4	22.7/23.5	23.0/24.4	19.1/21.5	21.5/22.6	21.9/22.8
Jul	23.6/25.3	23.0/24.2	23.5/24.2	23.8/25.7	19.9/21.5	21.4/22.8	22.4/23.8
Aug	24.6/27.7	23.2/25.7	23.5/26.4	24.0/27.3	19.6/22.7	20.6/24.3	22.9/25.6
Sept	20.8/25.0	21.8/23.5	22.1/23.8	23.1/25.1	19.4/20.3	20.0/22.0	21.6/23.1
WY Avg ^b	18.6/20.0	18.5/18.8	18.8/18.9	19.0/19.4	16.7/17.4	17.6/18.2	17.8/18.3

a) All values expressed in °C; WY13 values less than WY12 are expressed in red.

b) Water Year 2013/2012 values are based on averaging of monthly data (Oct- Sept).

Table G.1(E) Middle and East Section Water Temperatures (WY13/WY12)

Site	8	9	10	11	12	13	14	15
Reach	Mission Gorge			Lower Santee Basin		Upper Santee Basin		LSB ^c
Oct	18.6/19.0	15.9/17.1	18.1/19.8	18.2/18.6	-/20.7	19.4/19.6	19.2/19.6	19.4/19.9
Nov	13.3/15.1	12.2/13.4	12.9/15.2	14.2/15.2	-/16.2	14.3/15.1	14.2/15.6	13.2/15.2
Dec	10.1/9.1	7.4/5.7	10.2/9.5	11.8/9.2	12.1/11.6	11.6/10.3	12.3/10.1	9.9/9.3
Jan	8.2/10.2	6.8/9.3	8.4/10.6	8.7/10.8	9.3/12.8	8.9/10.8	9.7/11.1	9.2/10.4
Feb	11.5/12.3	9.8/10.3	11.8/12.9	11.4/12.1	14.6/14.9	12.1/13.3	12.4/13.1	12.6/13.7
Mar	15.7/16.5	13.2/13.5	16.5/17.3	15.2/15.5	19.0/18.1	17.0/15.9	16.5/16.3	16.8/16.3
Apr	14.9/16.4	11.2/13.8	15.4/18.6	13.8/16.7	18.2/21.7	17.6/19.4	17.6/18.6	15.4/18.4
May	20.1/20.6	16.9/17.5	21.4/22.2	18.4/18.5	-/21.0	20.5/21.3	20.9/21.0	20.4/21.4

Site	8	9	10	11	12	13	14	15
Jun	20.8/20.9	18.7/18.2	22.3/22.7	19.8/19.6	-/21.3	23.9/22.0	21.6/22.0	22.5/23.6
Jul	21.0/21.2	19.7/18.9	23.5/23.1	20.8/20.6	-/21.5	22.9/22.7	21.6/22.9	22.6/25.8
Aug	20.9/21.6	18.8/21.0	23.4/24.2	20.2/22.9	- / -	24.0/24.5	20.8/24.2	22.7/25.4
Sep	20.0/21.7	18.6/20.0	21.9/23.0	20.1/21.0	23.0/-	21.6/23.3	19.8/22.4	21.2/23.2
WY Avg ^b	16.3/17.1	14.1/14.9	17.2/18.3	16.1/16.7	16.0/18.0	17.8/18.2	17.2/18.1	17.2/18.6

a) All values expressed in oC; WY13 values less than WY12 are expressed in red.

b) Water Year 2013/2012 values are based on averaging of monthly data (Oct- Sept).

c) Tributary discharges within the Lower Santee Basin reach just upstream of Carlton Hills Golf course.

Table G.2(W) West Section Specific Conductivity (WY13/WY12)

Site #	1	2	3	4	5	6	7
Reach	Lower Mission Valley				Upper Mission Valley		
Oct	7.50/3.27	3.74/2.76	2.79/2.98	3.01/3.12	3.57/3.54	3.60/3.53	2.66/2.84
Nov	13.9/14.6	3.33/1.36	3.16/1.32	2.89/1.36	3.70/1.49	4.18/1.26	2.95/1.67
Dec	1.48/13.1	1.44/1.66	1.47/1.50	1.61/1.45	1.71/1.37	1.49/1.15	1.40/1.29
Jan	2.30/3.46	2.29/2.69	2.28/2.55	2.34/2.60	2.19/2.32	2.03/2.45	2.02/2.41
Feb	2.01/1.46	2.06/1.49	2.15/1.54	2.27/1.59	2.22/1.37	2.05/1.25	1.89/1.14
Mar	1.29/1.12	1.27/0.86	1.20/0.75	1.27/0.80	1.37/0.79	1.21/0.77	1.50/0.63
Apr	2.76/2.06	2.75/2.02	2.64/1.87	2.60/1.71	2.54/1.59	2.49/1.40	2.49/1.57
May	2.26/3.80	2.30/3.56	2.41/3.46	2.53/3.36	2.59/3.48	2.36/2.97	2.16/3.24
Jun	12.1/6.88	3.36/3.50	3.30/3.44	3.13/3.27	3.35/3.42	2.90/3.05	3.05/3.23
Jul	11.1/9.97	3.60/3.43	3.44/3.41	3.00/3.18	2.85/3.35	3.33/3.13	2.95/3.21
Aug	13.5/12.3	3.65/3.70	3.42/3.69	3.01/3.40	3.48/3.42	3.71/3.52	2.94/3.01
Sep	13.5/12.6	3.74/3.87	3.50/3.83	3.03/3.44	3.17/3.74	4.14/3.95	2.97/2.92
WY Avg ^b	6.98/7.04	2.79/2.58	2.65/2.53	2.56/2.44	2.73/2.49	2.79/2.37	2.42/2.26

a) All values expressed in milli-Siemen/cm; WY13 values less than WY12 are expressed in red.

b) Water Year 2013/2012 values are based on averaging of monthly data (Oct- Sept).

Table G.2(E) Middle and East Section Specific Conductivity (WY13/WY12)

Site	8	9	10	11	12	13	14	15
Reach	Mission Gorge			Lower Santee Basin		Upper Santee Basin		LSB ^c
Oct	3.21/2.63	5.67/5.14	2.67/2.64	2.68/2.61	-/2.0	2.27/2.18	1.82/1.91	2.60/2.65
Nov	2.21/1.88	5.40/4.79	2.21/1.90	2.53/2.02	-/1.96	2.41/1.74	1.83/1.63	2.73/2.71

Site	8	9	10	11	12	13	14	15
Dec	1.66/1.99	3.96/4.93	1.69/2.02	1.72/2.12	1.70/1.66	1.55/1.79	1.70/1.48	2.28/2.73
Jan	2.08/1.99	4.72/4.88	2.12/1.99	2.15/2.07	1.80/1.51	1.90/1.81	1.68/1.53	2.67/2.57
Feb	2.03/1.64	4.48/4.29	2.09/1.66	2.14/1.81	1.57/1.42	1.91/1.60	1.65/1.56	2.84/2.65
Mar	1.50/1.99	4.29/4.74	1.68/2.01	1.72/2.03	1.38/0.73	1.49/1.76	1.37/1.55	2.61/2.70
Apr	2.22/1.66	4.83/4.65	2.23/1.84	2.18/1.84	1.37/1.38	1.90/1.50	1.70/1.38	2.81/2.73
May	1.91/2.98	4.79/7.43	2.05/3.09	2.29/3.19	-/2.33	1.82/2.47	1.56/2.08	2.83/4.29
Jun	2.57/2.79	5.39/6.39	2.64/2.87	2.70/2.94	-/2.42	2.09/2.24	1.67/1.84	2.90/3.63
Jul	4.49/2.60	5.62/5.35	2.78/2.65	2.76/2.69	-/2.5	2.25/2.01	1.75/1.59	3.16/2.97
Aug	3.32/5.51	5.65/5.57	2.80/2.79	2.50/2.74	- / -	2.43/2.10	1.78/1.67	2.97/2.96
Sep	4.07/3.71	5.60/5.62	3.13/2.93	2.99/2.80	-1.78/-	2.49/2.26	-/1.64	2.86/2.80
WY Avg ^b	2.61/2.61	5.03/5.32	2.34/2.37	2.36/2.41	1.60/1.79	2.04/1.96	1.68/1.66	2.77/2.95

a) All values expressed in milli-Siemens/cm; WY13 values less than WY12 are expressed in red.

b) Water Year 2013/2012 values are based on averaging of monthly data (Oct- Sept).

c) Tributary discharges within the Lower Santee Basin reach just upstream of Carlton Hills Golf Course.

Table G.3(W) West Section pH (WY13/WY12)

Site #	1	2	3	4	5	6	7
Reach	Lower Mission Valley				Upper Mission Valley		
Oct	8.02/8.10	7.92/7.95	7.96/8.04	7.97/7.60	7.77/7.73	7.75/7.46	7.55/7.13
Nov	7.83/7.80	7.90/8.00	7.86/8.00	7.87/8.00	7.83/7.90	7.87/8.10	7.56/8.20
Dec	7.00/7.66	7.00/7.95	7.60/7.58	7.20/7.88	7.10/7.85	7.20/7.87	7.00/7.78
Jan	7.82/7.93	7.76/7.92	7.83/7.89	7.75/7.87	7.63/7.84	7.56/7.90	7.68/8.05
Feb	7.85/7.73	7.82/7.69	7.83/7.76	7.84/7.62	7.69/7.46	7.67/7.53	7.79/7.13
Mar	7.94/8.48	7.86/8.28	7.85/8.33	7.95/7.94	7.80/8.12	7.96/7.94	8.01/8.10
Apr	7.98/7.80	8.10/7.67	8.08/7.72	7.88/7.65	7.84/7.59	7.61/7.62	7.46/7.31
May	7.74/7.39	7.54/7.31	7.55/7.24	7.53/7.27	7.44/7.08	7.36/7.50	7.38/7.22
Jun	7.76/7.58	7.69/7.47	7.80/7.39	7.79/7.37	7.55/7.09	7.51/7.27	7.32/7.07
Jul	7.86/7.76	7.81/7.62	8.01/7.53	7.97/7.46	7.72/7.09	7.60/7.03	7.52/6.92
Aug	7.77/7.76	7.69/7.40	7.97/7.74	7.95/7.89	7.64/7.27	7.53/7.47	7.27/7.29
Sep	7.69/8.13	7.68/7.90	7.94/8.16	8.07/8.20	7.76/7.94	7.57/7.87	7.50/7.41
WY Avg ^b	7.77/7.84	7.73/7.76	7.86/7.78	7.81/7.73	7.38/7.58	7.60/7.63	7.50/7.47

a) All values are unit-less. b) Water Year 2013/2012 based on averaging monthly results (Oct- Sept).

Table G.3(E) Middle and East Section pH (WY13/WY12)

Site	8	9	10	11	12	13	14	15
Reach	Mission Gorge			Lower Santee Basin		Upper Santee Basin		LSB ^c
Oct	7.86/7.23	8.75/7.35	8.20/7.35	7.51/7.23	-/7.48	7.78/7.10	8.15/7.23	8.06/7.35
Nov	-/8.00	7.47/7.90	7.47/8.10	-/7.7	7.87/8.10	7.78/7.70	-/7.90	-/8.1
Dec	7.00/7.81	6.90/7.88	7.20/8.11	7.26/7.54	7.00/8.23	7.00/7.93	6.90/8.14	7.40/8.10
Jan	8.00/7.87	8.26/8.20	8.10/8.30	7.65/7.66	8.20/8.26	7.66/8.04	7.93/8.20	8.10/8.20
Feb	8.28/8.06	8.09/7.96	8.23/8.30	7.71/7.90	8.41/8.23	7.83/8.20	8.10/8.20	8.20/8.18
Mar	8.15/7.80	8.34/7.88	8.09/8.15	7.90/7.33	8.26/8.11	8.02/7.85	8.19/8.06	8.11/8.06
Apr	7.90/7.86	8.20/7.79	8.38/8.21	7.60/7.30	8.69/8.24	7.95/7.98	8.30/8.30	8.74/8.02
May	7.59/7.87	7.66/8.12	7.78/7.86	7.36/7.08	-/8.00	7.58/7.87	7.58/8.29	7.62/8.10
Jun	7.70/7.53	7.75/7.91	7.94/7.77	7.29/7.01	-/7.90	7.60/7.37	7.85/7.82	7.93/8.05
Jul	7.45/7.18	7.77/7.69	8.01/7.67	7.83/6.94	-/7.80	7.84/6.87	8.08/7.35	8.10/8.00
Aug	7.52/6.94	7.99/7.84	8.27/7.84	7.67/7.58	-/-	7.74/6.98	8.13/7.42	8.20/7.53
Sep	7.50/6.99	7.73/7.96	7.97/7.57	7.60/7.44	8.2/-	7.83/7.25	7.94/7.63	8.00/7.55
WY Avg ^b	7.72/7.59	7.91/7.87	8.02/7.94	7.58/7.39	8.13/8.03	7.80/7.60	7.92/7.88	8.04/7.94

a) All values are unit-less; WY13 values less than WY12 are expressed in red.

b) Water Year 2013/2012 values are based on averaging of monthly data (Oct- Sept).

c) Tributary discharges within the Lower Santee Basin reach just upstream of Carlton Oaks Golf course.

Table G.4(W) West Section Dissolved Oxygen (WY13/WY12)

Site #	1	2	3	4	5	6	7
Reach	Lower Mission Valley				Upper Mission Valley		
Oct	4.80/4.46	1.96/3.30	3.47/2.29	6.03/5.13	3.28/4.03	0.40/2.56	5.58/3.49
Nov	6.47/7.60	5.63/5.85	5.70/5.97	6.35/7.42	4.93/6.55	2.79/5.21	8.16/8.52
Dec	6.76/6.15	5.75/6.36	6.09/6.74	6.13/7.23	5.70/6.41	4.74/5.71	6.79/7.39
Jan	11.6/6.99	10.6/7.50	11.4/8.02	12.4/9.17	9.86/7.75	11.2/7.40	13.3/9.05
Feb	7.76/6.39	7.70/6.04	8.27/7.62	10.0/9.70	7.82/7.11	8.24/6.57	9.75/6.88
Mar	6.02/6.66	6.17/6.01	7.4/6.33	8.32/6.67	5.59/7.11	5.64/7.12	7.62/7.75
Apr	8.50/5.15	5.97/4.14	6.06/3.65	9.12/7.29	5.21/5.04	5.97/7.38	6.65/5.86
May	6.70/4.18	3.07/3.08	2.56/1.86	4.36/3.08	3.73/2.79	2.03/4.27	3.62/4.06
Jun	6.06/4.96	2.11/2.69	3.03/1.90	4.64/3.67	3.22/2.78	1.78/3.14	3.03/4.71
Jul	0.69/5.73	0.70/2.30	0.92/1.93	1.12/4.25	1.49/2.77	0.60/2.00	1.79/5.36

Site #	1	2	3	4	5	6	7
Aug	4.87/6.64	0.96/1.71	5.12/4.39	6.06/6.95	3.58/2.74	1.83/0.45	2.57/5.95
Sep	4.04/6.29	0.65/4.30	5.40/2.29	7.40/6.23	4.16/3.35	0.74/0.1	2.66/3.25
WY Avg ^b	6.19/5.93	4.27/4.44	5.46/4.42	6.83/6.40	4.88/4.87	3.83/4.33	5.96/6.02

a) All values expressed in milligrams/liter; WY13 values less than WY12 are expressed in red.

Table G.4(E) Middle and East Section Dissolved Oxygen (WY13/WY12)

Site	8	9	10	11	12	13	14	15
Reach	Mission Gorge			Lower Santee Basin		Upper Santee Basin		LSB ^c
Oct	6.93/8.07	10.3/10.4	4.83/7.14	5.02/6.00	-/5.33	1.27/1.22	2.40/2.27	3.26/5.33
Nov	10.5/10.4	12.8/10.1	10.7/9.78	7.22/8.25	-/9.76	0.18/0.96	2.51/2.99	6.26/7.19
Dec	10.0/10.5	10.4/12.3	8.42/9.07	7.05/8.33	8.93/8.67	2.80/1.64	4.54/3.44	6.50/7.52
Jan	12.9/9.9	12.3/11.1	12.7/8.54	10.6/8.35	9.70/7.45	3.86/2.25	4.83/3.28	9.65/7.04
Feb	10.4/9.24	10.4/10.8	8.90/8.50	7.62/5.96	7.83/7.31	3.01/1.86	3.93/5.54	6.28/6.89
Mar	10.5/8.30	10.9/9.75	9.38/7.50	7.64/6.52	7.25/6.99	2.02/0.67	3.73/3.06	7.17/7.11
Apr	8.51/7.82	10.1/8.39	9.36/6.87	6.68/6.37	7.91/6.47	1.54/0.34	2.89/3.36	6.00/5.64
May	6.63/6.57	8.80/9.23	5.53/8.30	4.29/5.09	-/6.54	0.41/0.26	2.48/2.85	3.25/7.82
Jun	5.02/6.44	5.06/8.52	4.93/7.10	5.42/4.71	-/6.25	0.40/0.39	2.74/2.40	6.63/7.76
Jul	2.56/6.31	5.24/7.80	1.80/5.90	5.28/4.33	-/6.01	1.06/0.51	1.42/1.95	2.49/7.70
Aug	2.75/3.43	8.79/9.30	9.15/3.20	5.42/6.33	-/-	2.01/0.61	2.62/1.76	5.35/6.33
Sep	2.32/1.42	8.29/8.25	2.40/0.96	5.33/4.85	6.17/-	0.42/0.09	2.77/2.33	3.39/3.95
WY Avg ^b	7.41/7.36	9.44/9.66	7.35/6.91	6.47/6.26	7.97/7.07	1.58/0.90	3.07/2.94	5.52/6.69

a) All values expressed in milligrams/liter; WY13 values less than WY12 are expressed in red.

b) WY13/12 Avg. values are based on averaging of monthly data (Oct-Sept).

c) Tributary discharges within the Lower Santee Basin reach just upstream of Carlton Oaks Golf course.

Table G.5(W) West Section Dissolved Oxygen Percent Saturation (WY13/WY12)

Site #	1	2	3	4	5	6	7
Reach	Lower Mission Valley				Upper Mission Valley		
Oct	54/49	22/36	39/25	63/58	36/44	5/28	63/38
Nov	70/85	57/59	57/60	67/75	49/66	29/51	81/85
Dec	61/62	53/58	56/61	55/66	52/58	44/51	62/67
Jan	105/66	94/71	102/76	112/86	86/71	99/71	90/83

Site #	1	2	3	4	5	6	7
Feb	75/63	74/58	77/74	98/94	73/68	79/63	94/65
Mar	62/64	64/57	77/61	86/64	57/67	59/67	82/72
Apr	93/56	65/46	66/41	100/80	55/55	64/81	76/55
May	80/49	36/36	30/22	52/36	43/33	24/51	43/47
Jun	72/61	25/32	35/23	55/45	36/32	20/37	35/55
Jul	9/72	8/28	11/24	13/53	16/32	12/23	21/63
Aug	61/88	12/21	62/57	73/88	40/32	21/6	30/74
Sep	47/84	8/48	63/27	88/77	46/38	9/1	31/38
WY11 Avg ^b	66/67	43/46	56/46	72/68	49/50	39/44	59/62

a) All values expressed in percent; WY13 values less than WY12 are expressed in red.

b) Water Year 2013/2012 values are based on averaging of monthly values (Oct- Sept).

Table G.5(E) Middle and East Section Dissolved Oxygen Percent Saturation (WY13/WY12)

Site	8	9	10	11	12	13	14	15
Reach	Mission Gorge			Lower Santee Basin		Upper Santee Basin		LSB ^c
Oct	75/87	107/110	53/79	54/65	-/59	15/14	27/25	37/59
Nov	101/104	121/99	102/99	72/83	-/101	2/10	25/31	60/74
Dec	89/90	88/98	76/79	64/75	86/80	26/15	44/31	59/66
Jan	109/88	105/98	114/77	94/76	88/71	34/21	43/29	86/64
Feb	93/87	93/99	85/81	70/56	78/73	32/18	39/53	58/67
Mar	107/85	105/95	98/80	77/66	79/72	22/7	38/34	64/73
Apr	86/83	94/84	94/75	65/67	85/75	17/4	28/36	62/62
May	74/69	91/101	64/98	53/56	-/75	6/3	27/34	37/90
Jun	57/70	56/93	58/84	61/52	-/73	7/5	34/28	66/83
Jul	31/70	58/85	23/70	60/49	-/70	13/6	17/23	30/75
Aug	32/40	96/105	109/38	61/75	-/-	25/8	32/22	66/78
Sep	27/17	90/95	29/12	62/56	61/-	5/1	31/21	39/53
WY Avg ^b	73/74	92/97	75/73	66/65	79/75	17/9	32/31	55/70

a) All values expressed as percent; WY13 values less than WY12 are expressed in red.

b) Water Year 2013/2012 values are based on averaging of monthly (Oct- Sept) data.

c) Tributary discharges within the Lower Santee Basin reach just upstream of Carlton Oaks Golf course.

Appendix H - WY13 LSDR WQM Data by Others

U.S. Geological Survey (USGS) stream flow values (mean daily discharge in cubic feet per second) presented in **Table H.1** for the two Lower San Diego River gauging stations are provisional data subject to revision. Processing and review of the 2012 data is typically completed in December with subsequent approval for publication. The two stations are managed by the Poway South Field Office. Data for the San Diego River gauging stations as well as other streams and rivers throughout California are available via URL at <http://waterdata.usgs.gov/nwis/dv?>.

Table H.1 USGS Stream Flow Data (WY13/WY12)

	Fashion Valley (Sta. 11023000)				Santee Basin (Sta. 11022480)			
Month	Min.	Max.	ADF ₃ ^a	ADFm ^b	Min.	Max.	ADF ₃ ^a	ADFm ^b
Oct	1.3/1.3	3/82	1.8/3.2	2.2/6.3	0.4/1.1	10/29	0.8/4.1	1.4/4.8
Nov	0.8/1.9	4/361	1.9/19	2.3/40	1.8/2.5	12/206	2.1/17	2.3/18.6
Dec	1.5/9.0	220/187	17/21	27/42	3.1/7.7	224/128	17/9	16/24
Jan	8.4/8.2	140/84	9.7/20	20/10	6.4/6.8	165/61	7.5/7.0	14.2/8
Feb	9/17	36/121	12.3/41	25/28	6.9/6.5	100/100	7.6/12	21/15.8
Mar	9/27	118/227	21/172	29/35	6.2/6.0	231/178	15.7/6.4	28/21
Apr	9/10	7/104	3.8/15	8/39	3.3/6.7	6/84	3.7/11.3	6.4/25.3
May	3.9/7.2	45/15	2.8/5.0	6.4/18	1.2/2.5	39/14	2.7/4.2	5.9/13.3
Jun	2.2/4.2	3.0/3.8	1.9/2.8	1.7/3.6	0.2/1.4	1.4/3.0	0.5/2.5	1.3/3.0
Jul	1.3/2.2	3.2/2.2	2.6/1.5	2.6/1.5	0.0/0.8	0.8/1.9	0.02/0.6	0.2/2.0
Aug	1.4/1.5	2.1/2.5	1.0/2.1	1.7/1.7	0.0/0.4	0.4/1.0	0.1/0.6	0.0/1.0
Sep	1.2/1.2	0.8/2.2	0.3/1.7	0.7/1.9	0.0/0.2	1.5/2.8	0.1/0.5	0.2/0.7
WY13/12 Avg.			6.4/25	10.5/19			4.8/6.3	8.1/11.5

a) Average daily flow during 3-day period of water quality monitoring.

b) Average daily flow for entire month.

c) WY13 values lower (less) than WY12 are expressed in red.

Average daily flow in WY13 was down 30% (3.4 cfs) in the eastern portion of the LSDR and down 45% (8.5 cfs) in the western portion from WY12. LSDR total discharge during WY13 amounted to 5,864 AF vs 8,326 AF for WY12 and 26,000 AFY on average over the past 48 years of record. Average annual streamflow for WY13 amounted to less than 23 % of the 48-year mean flow for LSDR. The summer season (June-Sept) of WY13 represented one of the lowest periods of dry weather flow recorded at Fashion Valley since the mid 1980's.

San Diego CoastKeeper (SDCK) coliform count values (in MPN/100 mL) from the organization's two San Diego River monitoring stations for WY13 and WY12 are presented in **Table H.2**. Monitoring results from 2009 through 2011 for selected San Diego area watersheds, including the lower San Diego River (HSU 907.1), can be accessed via the organization's URL website at: <http://www.sdwatersheds.org/wiki/Main-Page>.

Table H.2 San Diego CoastKeeper Coliform Count Data WY13/WY12

	Fashion Valley Road (SDG-010)			Old Mission Historical Dam (SDG-020)		
Month	EColi ^(a)	Enterocc ^(b)	TCB ^(c)	EColi ^(a)	Enterocc ^(b)	TCB ^(c)
Oct	310/110	280/90	3080/2490	620/160	100/10	11200/6870
Nov	-/150	-/-	-/2600	-/360	-/-	-/4610
Dec	-/-	-/-	-/-	-/-	-/-	-/-
Jan	2490/-	1200/-	24190/-	3450/-	8660/-	24190/-
Feb	-/30	-/-	-/1250	-/10	-/-	-/1010
Mar	90/240	710/1220	850/2140	20/-	40/-	1180/-
Apr	10/40	40/30	800/480	30/70	60/70	4880/1160
May	20/160	90/30	1550/1040	10/10	60/30	5170/930
June	110/30	40/40	2140/2190	10/30	20/680	360/1140
July	20/30	30/90	1330/1330	10/10	10/150	140/680
Aug	-/50	-/-	-/1400	-/20	-/10	-/670
Sept	-/230	-/-	-/1940	-/50	-/10	-/610
WY13/12 Avg.	440/110	340/250	4850/1690	590/80	1280/190	6730/1960
WY MCC ^(d)	80/80	140/80	2170/1530	55/30	80/80	2360/6730
Summer	35/70	50/50	1640/1520	10/10	20/140	640/780
Winter	160/90	310/150	2670/1530	190/80	220/30	6290/2470

a) Escherichia-coli (E.coli) bacteria expressed in MPN/100mL

b) Enterococcus (faecalis) bacteria expressed in MPN/100mL

c) Total Coliform bacteria (common) expressed in MPN/100mL.

d) Mean coliform counts for WY13/WY12 calculated by SDRPF RiverWatch for comparative purposes only; values are neither endorsed nor validated by the San Diego CoastKeeper organization.

e) WY13 values lower (less) than WY12 are expressed in red.

Mean coliform counts vary can vary considerably from month to month however there is little evidence of an established pattern from season to season, from east to west or from year to year. Highest TCB's are typically monitored following storm flow (wet weather) events such as in Jan. of this year.

Appendix I - Water Quality Indexing

Decision-makers, non-technical water managers, numerous vested watershed stakeholders as well as the general public usually have neither time nor training to study and understand detailed technical assessments of water quality data. Over the last several decades numerous indexes have been developed to summarize water quality data in an easily expressed and readily understood format. Water quality professionals are often resistant to any automated, uncritical summarization represented by such indexes; there are sound reasons to use results with caution. Often scientists and water resource professionals prefer to provide no answer rather than an imperfect answer that can lead to misunderstanding. Layman and many decision makers, however, prefer an imperfect answer to no answer at all. Using an index may not be the optimal way to fully understand large-scale water quality issues, but it does provide a reasonable tool for gaining insight. Professionals can appreciate the need for imperfect answers and conversely others need to recognize and accept an answer's limitations.

Water quality indexing was first proposed and demonstrated in the 1970s, however, prior to the personal computer, calculations were fairly labor-intensive so the technique was not widely used or accepted by many monitoring agencies. As use and limitations were commonly misunderstood, the potential of using an index for communicating water quality status and trends was often overlooked. Evaluation of water quality in terms of raw data can be very misleading and confusing not only for the layman but also to stakeholders with diverse and sometimes conflicting perspectives. It is typically difficult for individuals interested in water quality to interpret reams of raw data in order to gain an understanding of water quality conditions. This quest often results in faulty conclusions regarding water quality status and watershed management practices. An index is simply an attempt to integrate complex analytical data and generate a single number expressing the relative degree of impairment of a water body at a given point in time or given locale. The underlying objective of the exercise is to enhance communications with the general public, interested stakeholders, public agencies and increase citizen awareness of water quality conditions.

By design indexes contain less information than the raw data they summarize; many uses of water quality data cannot be met with an index. An index is generally most useful for comparative purposes (e.g., what river sites or reaches have particularly poor water quality?) and for temporal questions (e.g., how is the water quality at present relative to what it has been in the past?). Indexes are less suited to specific questions. Site-specific decisions need to be based on analysis of original water quality data. Basically, an index can be a useful tool for "communicating water quality information to the lay public and to legislative decision makers," it is not, however "a complex predictive model for technical and scientific application". This index was developed as a mechanism to summarize and report routine monitoring data to interested parties. SDRPF's RiverWatch team does not monitor biological constituents or toxic substances, thus issues related to public health, body contact recreation and aquatic life are not effectively addressed by the index.

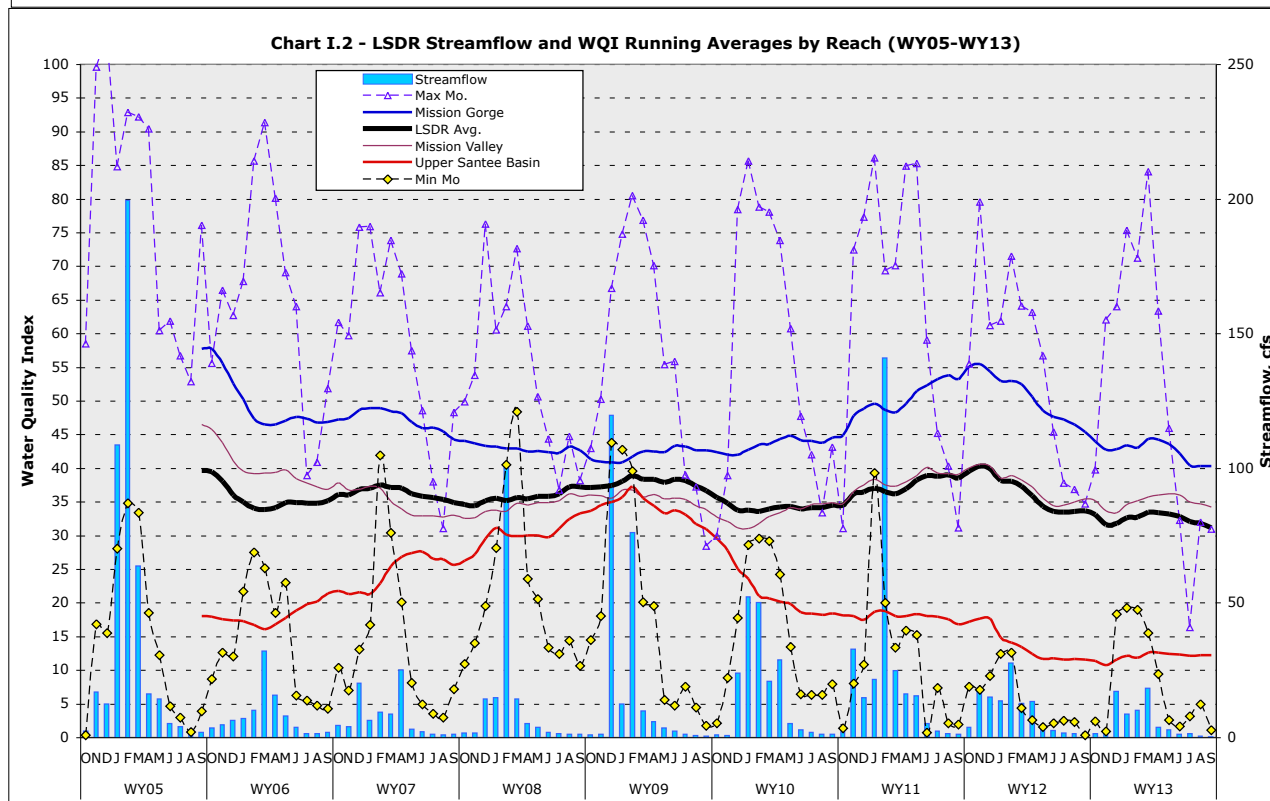
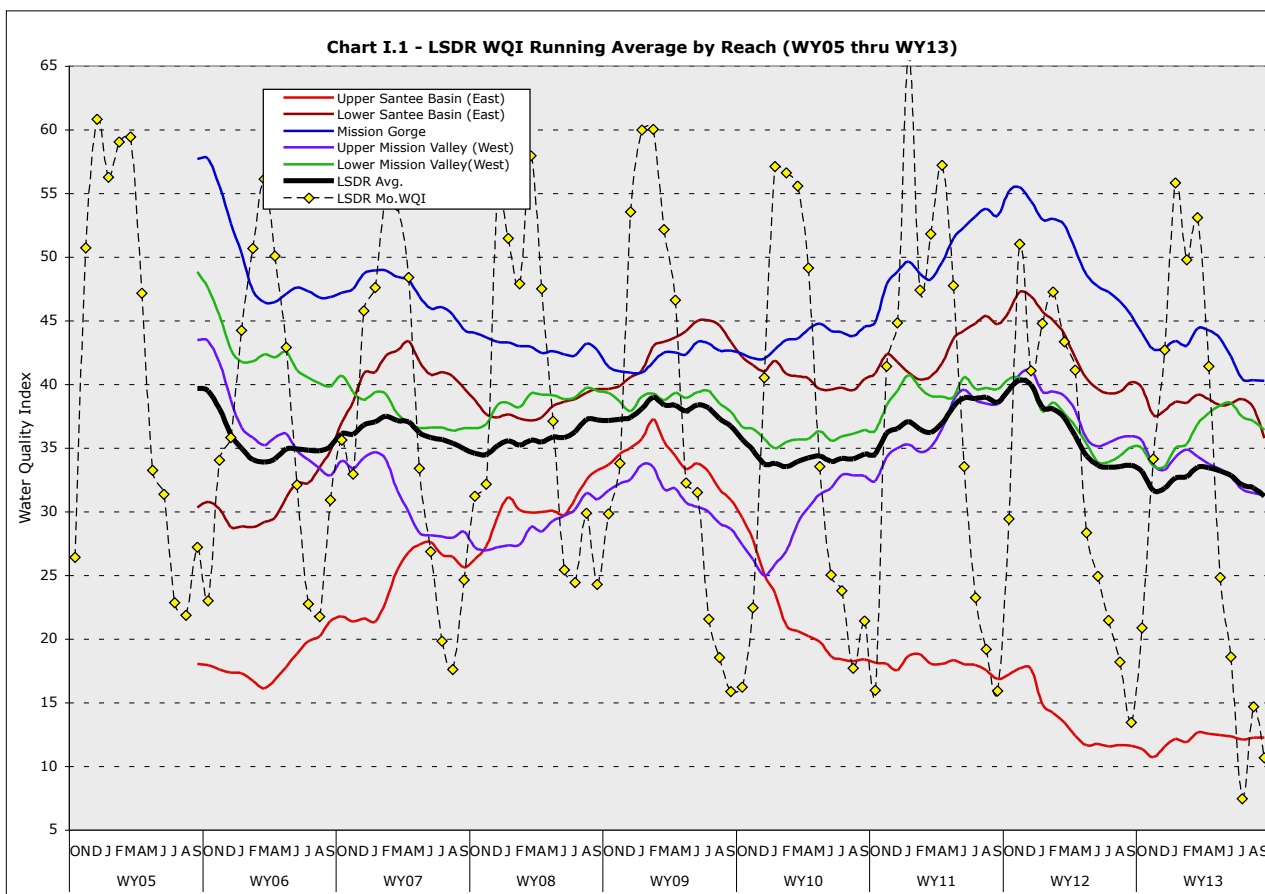
Besides being general in nature (i.e., imprecise), there are several reasons that an index may fail to accurately communicate water quality information. First, most indexes are based on pre-identified sets of water quality constituents. For example, a specific site may show a good WQI score, and yet have water quality impaired by other constituents not included in the index. Another reason, data aggregation can mask, normalize or over-emphasize short-term water quality issues. A satisfactory WQI at a particular site or reach does not necessarily mean that water quality is or always was satisfactory. A good score, however, does at least indicate that inferior water quality for those constituents evaluated is not chronic during the period included for the index.

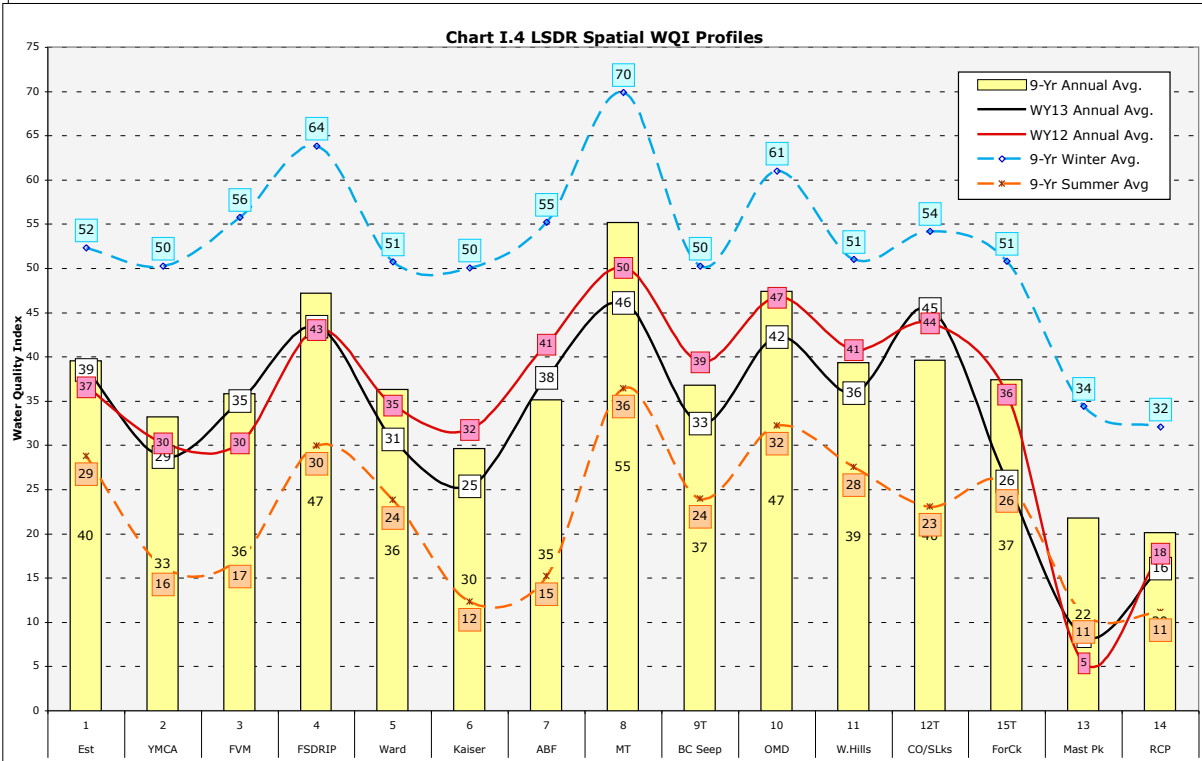
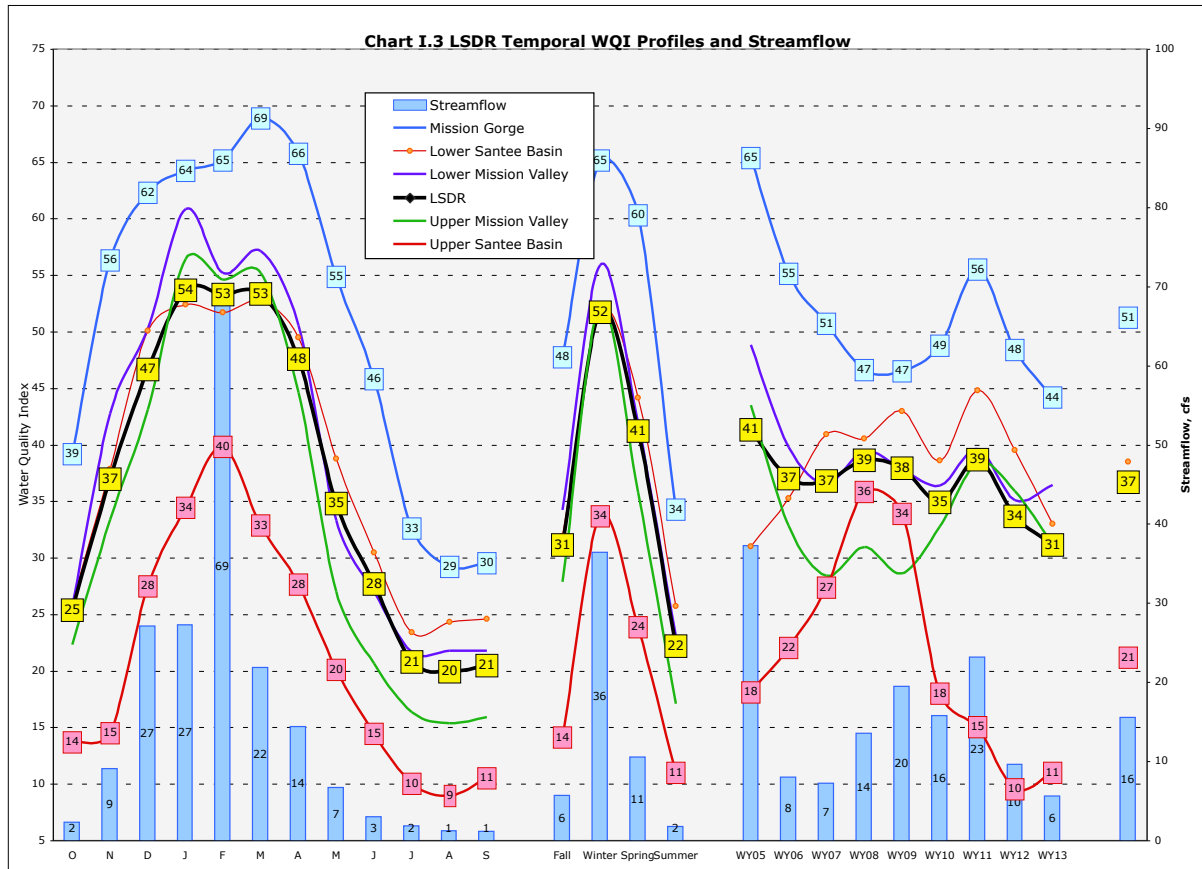
The index has been developed for the purpose of providing a simple and concise expression of regularly monitored physical-chemical and bacteriological water quality data compiled by the SDRPF RiverWatch Team as well as several other monitoring groups; it is intended to aid in assessment of the Lower San Diego River watershed primarily for non-body contact recreational uses and environmental enhancement. It constitutes a mechanism to compare averages, variances and trends in normalized values over time (temporally) and by relative location (spatially) within the watershed. The index allows anyone to easily interpret large amounts of aggregated data and relate overall water quality variation to changes, be they from natural causes or man-made impairments. The WQI is used to identify general water quality trends over the past 8 years of monitoring and potential problem areas within the SDR watershed. Such patterns and locations can then be screened and evaluated in greater detail through direct observation of pertinent site-specific data by public agencies and water quality professionals entrusted with protection and enhancement. Used in this manner, the index provides a supplemental metric for evaluating effectiveness of the many San Diego River water quality improvement programs and also assist responsible agencies and organizations in establishing priorities for watershed management.

Running average LSDR WQI values from WY05 through WY12 are expressed by river reach and river section on **Charts I.1 and I.2**, respectively. **Chart I.1** also presents overall LSDR monthly WQI values over the 8-year period. Both seasonal patterns and trends in WQI values can be seen. **Chart I.2** provides the range (max-min) in monthly WQI values as well as average monthly streamflow. The water quality fluctuations over time in individual reaches, sections and the overall (average) Lower San Diego River expressed on both a running average basis and the annual cycle can be observed. The Upper Santee Basin reach (Sites 13 & 14) presents lowest index values since March of 2010, whereas the Mission Gorge (middle section) reach consistently presents highest values. There has been a general decline in overall water quality, as evidenced by the WQI values, since November of 2011. The running (12-mo) average index value fell by 9 units (22.5%) from high of 40 (13% above the 9-yr mean) over the last 22 months to a current (Sept '13) low of 31 (-13% below the 9-yr mean).

Chart I.3 presents a temporal summary of variances in the water quality index values profiled on a monthly, seasonal and average annual water year basis for each river reach and the overall LSDR average. These variances are compared to changes in streamflow on the same basis. The positive correlations are evident, i.e., increase in average daily flow results in improved water quality. Low flow throughout the summer period results in poorest water quality.

Chart I.4 provides a spatial profile of average annual WQI by river monitoring site, reach and section for this year (WY13), last (WY12) and the 9-Yr winter, summer and annual averages. The sites are in chronological order ascending upstream. The current (WY13) average annual WQI values shown in black are below those from last year (WY12) shown in red at all monitoring sites. The WQI values for WY13 are also below the 9-Yr averages (yellow bars) at all but two (7&12T) monitoring sites. For the third consecutive year, Site 13 (Mast Park) has demonstrated lowest water quality values.





Appendix J - LSDR Water Quality Monitoring Data Summary Sheets

Table J.1 WQM Data Summary (Annual & Seasonal Averages)										
	WY05	WY06	WY07	WY08	WY09	WY10	WY11	WY12	WY13	9-Yr Avg.
Annual (October-September):										
ADF, cfs	76	14	10	19	21	34	50	15	9	32
Temp, °C	17.7	18.3	17.7	17.7	17.7	18.1	17.8	18.0	17.3	17.8
SpC, uS/cm	2.125	2.175	2.409	2.313	2.486	2.357	2.204	2.380	2.490	2.326
DO, mg/L	6.84	5.87	5.91	6.31	6.20	5.40	5.82	5.59	5.68	5.99
DO%Sat, %	67	58	59	65	65	57	60	58	58	61
pH	7.58	7.33	7.49	7.89	7.61	7.85	7.89	7.72	7.78	7.68
MCC, #/uL	-	-	-	-	440	600	420	510	800	550
WQI	41	37	37	39	38	35	39	34	31	37
Grade	C+	C	C	C	C	C-	C	D+	D	C
Summer (June-September) Period:										
ADF, cfs	3.6	2.5	1.5	1.6	1.2	1.9	2.7	1.9	1.1	2.0
Temp, °C	21.8	23.7	21.8	22.9	22.8	21.9	21.7	22.9	21.7	22.5
SpC, uS/cm	2.612	2.470	2.759	3.059	3.239	3.031	2.852	3.121	3.068	2.912
DO, mg/L	5.11	5.02	4.85	5.45	4.94	3.94	4.03	4.00	3.50	4.54
DO%Sat, %	53	56	52	63	56	46	46	47	40	51
pH	7.58	7.33	7.70	8.08	7.72	7.70	7.85	7.47	7.75	7.69
MCC, #/uL	-	-	-	-	350	90	260	430	400	310
WQIa	26	27	22	26	22	22	23	20	13	22
Grade	D-	D	E	D-	E	E	E+	E	E	E
Winter (December-March) Period:										
ADF, cfs	175	23	22	51	54	86	127	23	23	63
Temp, °C	13.5	12.8	13.8	12.4	13.3	15.7	13.7	12.4	12.4	13.5
SpC, uS/cm	1.437	1.953	2.028	1.562	1.552	1.369	1.324	1.687	2.021	1.659
DO, mg/L	9.55	6.72	6.97	7.17	7.45	6.35	7.66	7.24	8.01	7.47
DO%Sat	89	60	67	68	73	64	75	68	76	71
pH	7.51	7.46	7.42	7.89	7.52	7.85	7.96	7.96	7.74	7.70
MCC, #/uL	-	-	-	-	560	1480	470	720	1640	970
WQIa	59	47	51	53	56	52	53	44	50	52
Grade	B	C+	B-	B-	B	B-	B-	C	B-	B-

a) Percent change in this year's value (WY13) from last year (WY12).

(b) Percent change in this year's value (WY13) from first year (WY05).

(c) Percent change in this year's value (WY13) above (+) or below (-) 9-yr Average.

d) Values in red represent values below 9-Yr average.

Table J.2 WQM Spacial Data Summary (9-Yr Averages)

Section	Mission Valley		Mission Gorge	Santee Basin		Watershed
Sites	1-4	5-7	8-10	11,12 &15	13&14	all (1-15)
Reach	LMV	UMV	MG	LSB	USB	LSDR ^(a)
Annual (Oct-Sept):						
ADF, cfs	35	30	20 ^(b)	19	15	28
Temp, °C	19.2	17.7	17.0	17.2	18.0	17.8
SC, mS/cm	2.552	2.537	2.235	2.223	1.742	2.326
DO, mg/L	5.58	4.94	7.87	6.89	3.75	5.96
DOSat, %	59	51	81	66	38	61
pH	7.70	7.55	7.66	7.81	7.67	7.66
MCC, #/100mL	430	-	540	-	-	550
WQIa	39	34	51	39	21	37
Grade	C	D+	B-	C	D	C
Rating	Fair	Marginal	Good	Fair	Marginal	Fair
Summer (June-Sept) Period:						
ADF, cfs	2.3	2.1	1.2 ^(c)	1.5	1.1	2.0
Temp, °C	24.3	21.7	21.7	21.7	22.8	22.5
SC, mS/cm	3.301	3.215	2.842	2.599	1.984	2.912
DO, mg/L	4.04	3.17	6.55	5.85	2.80	4.54
DOSat, %	48	36	74	61	32	51
MCC, #/100mL	270	-	560	-	-	310
WQIa	23	17	34	26	11	22
Grade	E+	E	D+	D-	E	E
Rating	Poor		Marginal		Poor	Poor
Winter (Dec-March) Period:						
ADF, cfs	80	72	50	40	25	63
Temp, °C	14.4	13.6	12.8	13.0	13.5	13.5
SC, mS/cm	1.782	1.732	1.533	1.786	1.394	1.659
DO, mg/L	7.36	6.95	9.03	8.07	4.88	7.47
DOSat, %	72	67	86	72	45	71
MCC, #/100mL	1740	-	860	-	-	970
WQIa	56	52	65	52	34	52
Grade	B	B-	B	B-	D+	B-
Rating	Good				Marginal	Good

(a) Weighted average of all reaches within the Lower SDR watershed.

(b) Stream flow based on averaged river gains and losses between Santee Basin and Mission Valley.

(c) During periods when surface water is evident; intermittent dry-weather conditions.