



# SPRING 2024 RIVERBED HOMELESSNESS CENSUS

By The San Diego River Park Foundation

Census Completed April 4-7, 2024

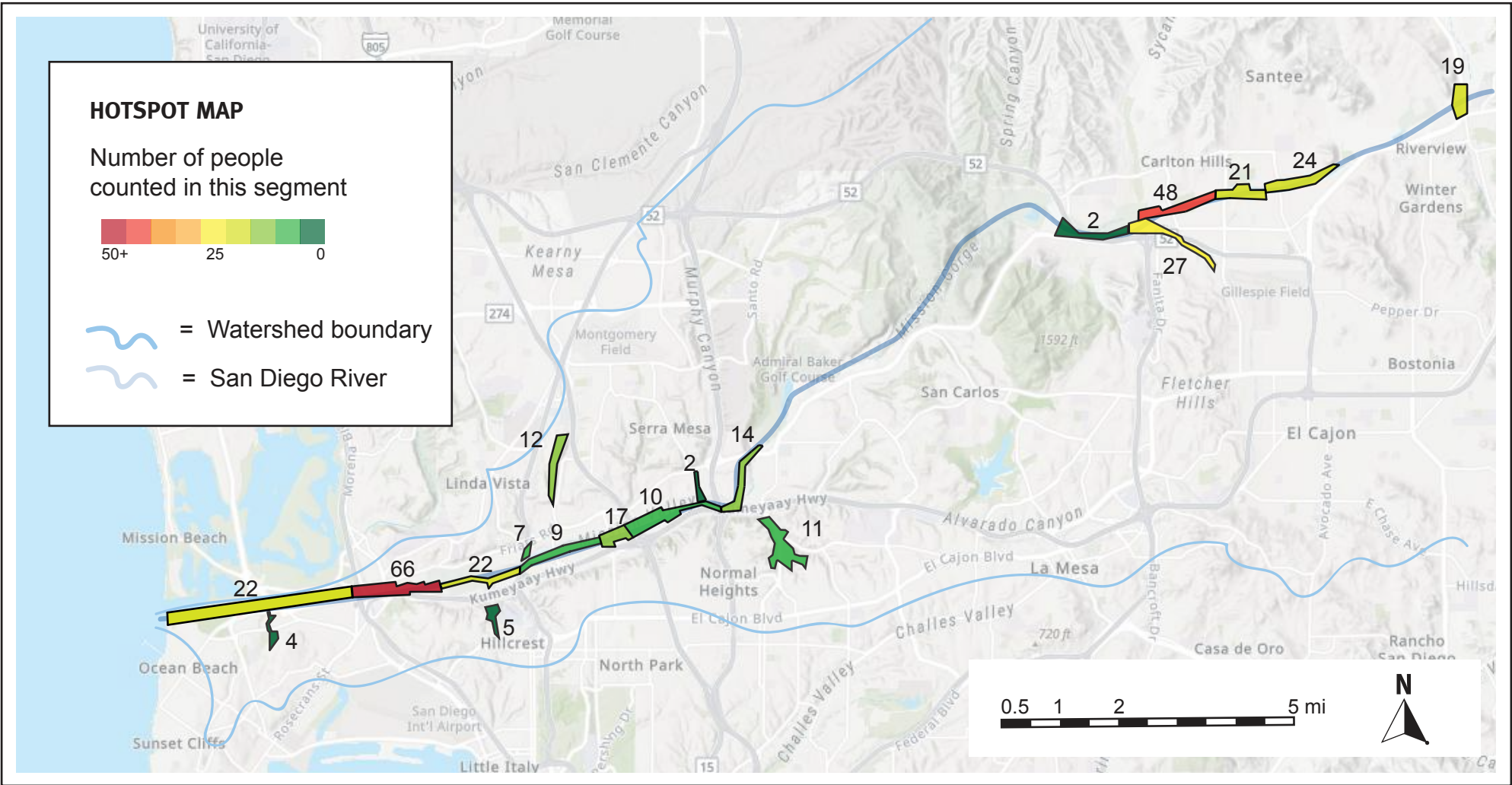
Contact: [info@sandiegoriver.org](mailto:info@sandiegoriver.org) or (619) 297-7380

## HOMELESSNESS CENSUS

The San Diego River Park Foundation coordinates volunteers to document people experiencing homelessness in the San Diego Riverbed. During the spring census, SDRPF volunteers conducted field surveys on foot over 4 consecutive mornings on April 4-7 in the segments below. Volunteers were trained to document hand-built structures, individuals, and inhabited vehicles. The below numbers report only inhabited vehicles parked within naturalized areas, not adjacent parking lots or streets. This survey included some tributary areas. These are the results:

	Hand-Built Structures	Individuals	Inhabited Vehicles	Estimated* Total People
City of San Diego: standard areas	68	26	10	165
City of San Diego: new tributary areas	21	0	0	37
City of Santee: standard areas	61	10	1	119
unincorporated County	11	0	0	19
<b>TOTAL</b>	<b>161</b>	<b>36</b>	<b>11</b>	<b>340</b>

*\*based on the most recent Regional Task Force on Homelessness multipliers (2018): x1.75 for hand-built structures and x2.03 for inhabited vehicles*



## TRENDS OVER TIME

Total people experiencing homelessness in the San Diego Riverbed by shelter type  
(trend analysis excludes canyons because surveys there started in 2021)

