



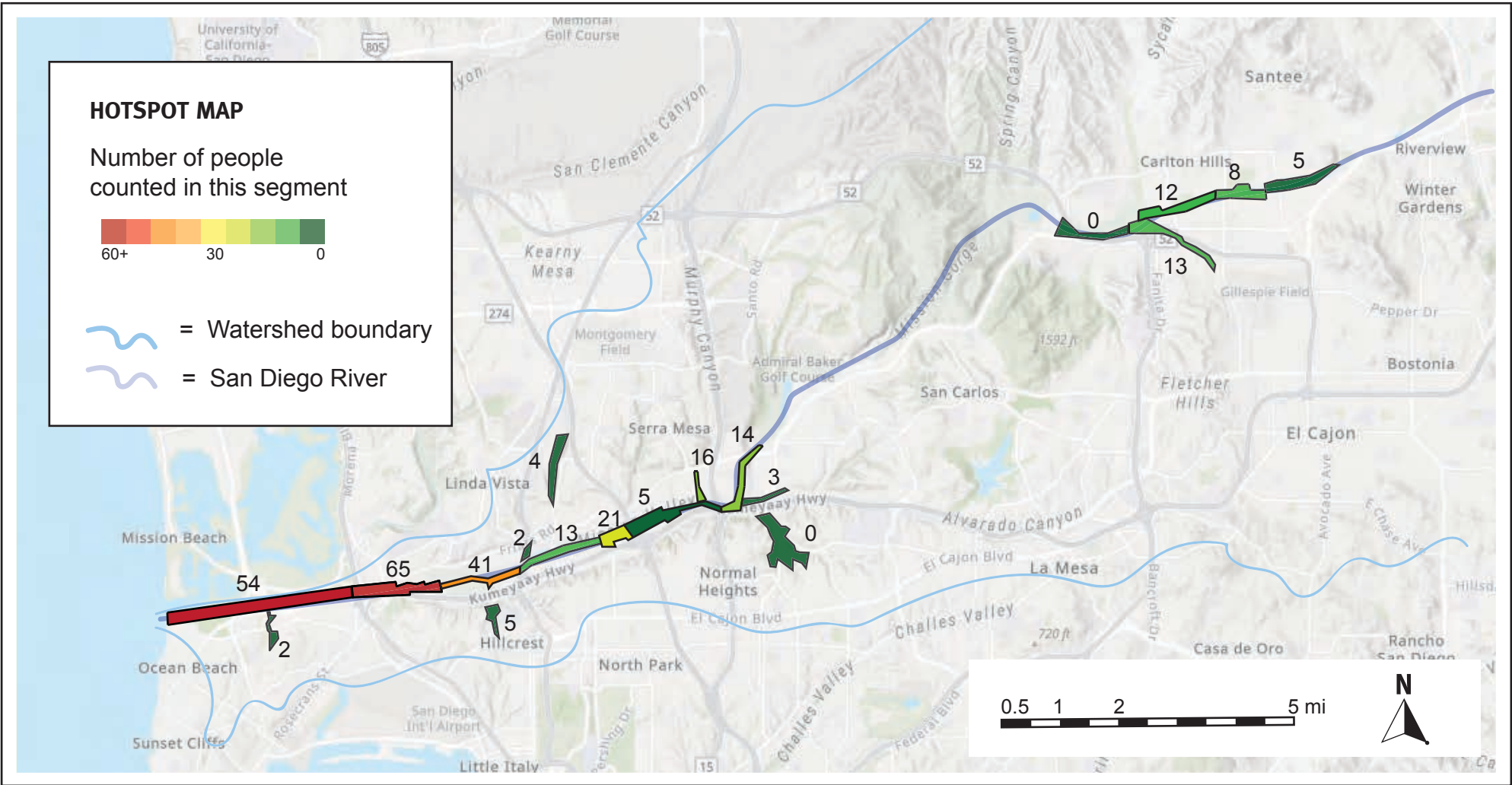
SPRING 2025 RIVERBED HOMELESSNESS CENSUS

By The San Diego River Park Foundation
Census Completed April 10-13, 2025
Contact: info@sandiegoriver.org or (619) 297-7380

HOMELESSNESS CENSUS

The San Diego River Park Foundation coordinates volunteers to document people experiencing homelessness in the San Diego Riverbed. During the spring census, SDRPF volunteers conducted field surveys on foot in the early morning hours over four consecutive days (April 10-13) in the segments below. Volunteers were trained to document hand-built structures, individuals, and inhabited vehicles. The below numbers report only inhabited vehicles parked within naturalized areas, not adjacent parking lots or streets. This survey included some tributary areas. These are the results:

	Hand-Built Structures	Individuals	Inhabited Vehicles	Estimated* Total People	
City of San Diego: standard areas	78	42	18	215	<i>*based on the most recent Regional Task Force on Homelessness multipliers (2018): x1.75 for hand-built structures and x2.03 for inhabited vehicles</i>
City of San Diego: new tributary areas	12	8	0	29	
City of Santee: standard areas	16	9	0	37	
TOTAL	106	59	18	281	



TRENDS OVER TIME

Total people experiencing homelessness in the San Diego Riverbed by shelter type
(trend analysis excludes canyons because surveys there started in 2021)

