



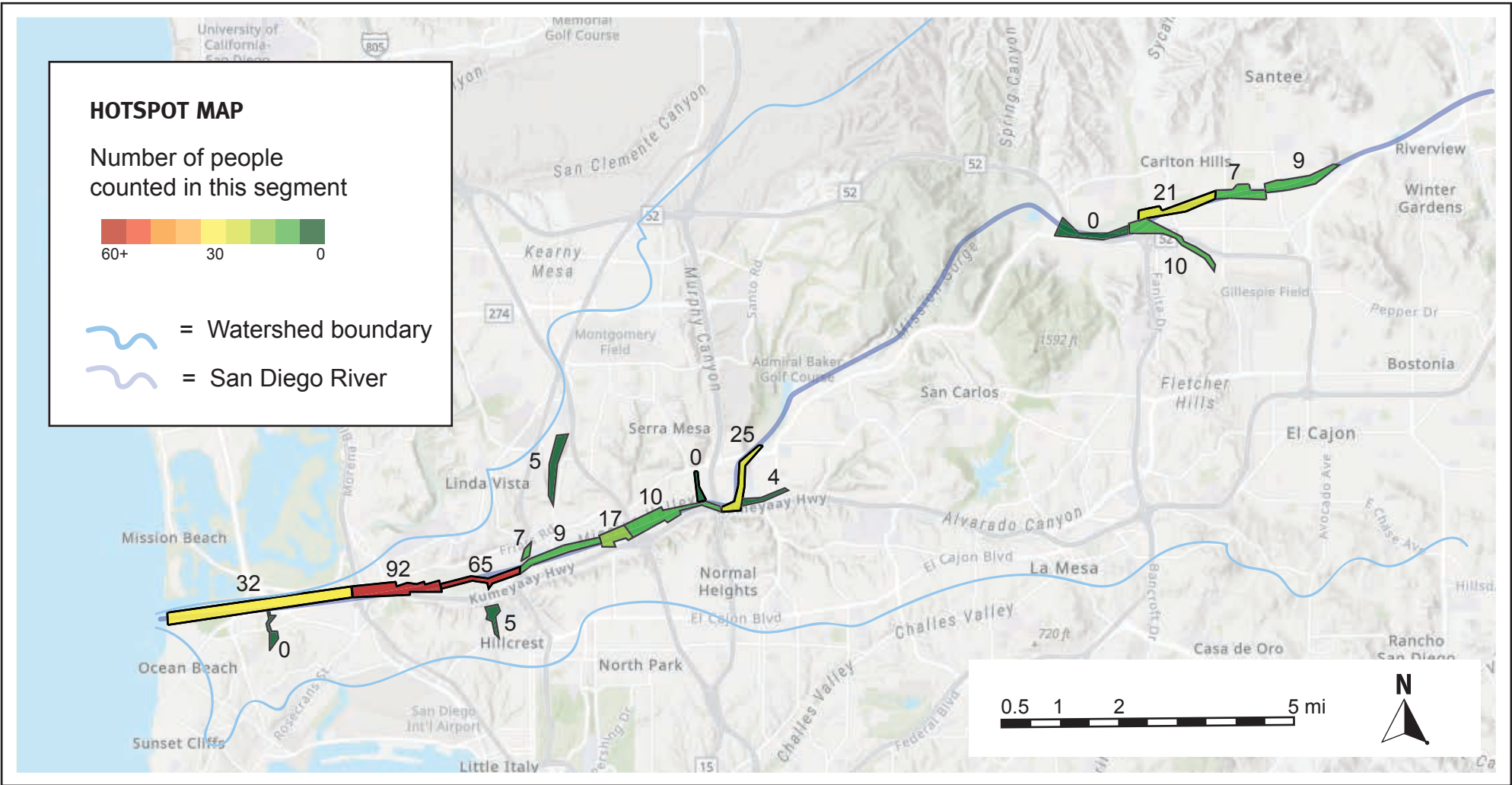
WINTER 2025 RIVERBED HOMELESSNESS CENSUS

By The San Diego River Park Foundation
Census Completed January 30, 2025
Contact: info@sandiegoriver.org or (619) 297-7380

HOMELESSNESS CENSUS

The San Diego River Park Foundation coordinates volunteers to document people experiencing homelessness in the San Diego Riverbed. During the winter census, SDRPF volunteers conducted field surveys on foot in the early morning hours of January 30, 2025 in the segments below. Volunteers were trained to document hand-built structures, individuals, and inhabited vehicles. The below numbers report only inhabited vehicles parked within naturalized areas, not adjacent parking lots or streets. This survey included some tributary areas. These are the results:

	Hand-Built Structures	Individuals	Inhabited Vehicles	Estimated* Total People	
City of San Diego: standard areas	92	62	13	249	<i>*based on the most recent Regional Task Force on Homelessness multipliers (2018): x1.75 for hand-built structures and x2.03 for inhabited vehicles</i>
City of San Diego: new tributary areas	12	0	0	21	
City of Santee: standard areas	24	4	0	46	
TOTAL	128	66	13	316	



TRENDS OVER TIME

Total people experiencing homelessness in the San Diego Riverbed by shelter type
(trend analysis excludes canyons because surveys there started in 2021)

