



SPRING 2026 RIVERBED HOMELESSNESS CENSUS

By The San Diego River Park Foundation

Census Completed April 10-11, 2026

Contact: info@sandiegoriver.org or (619) 297-7380

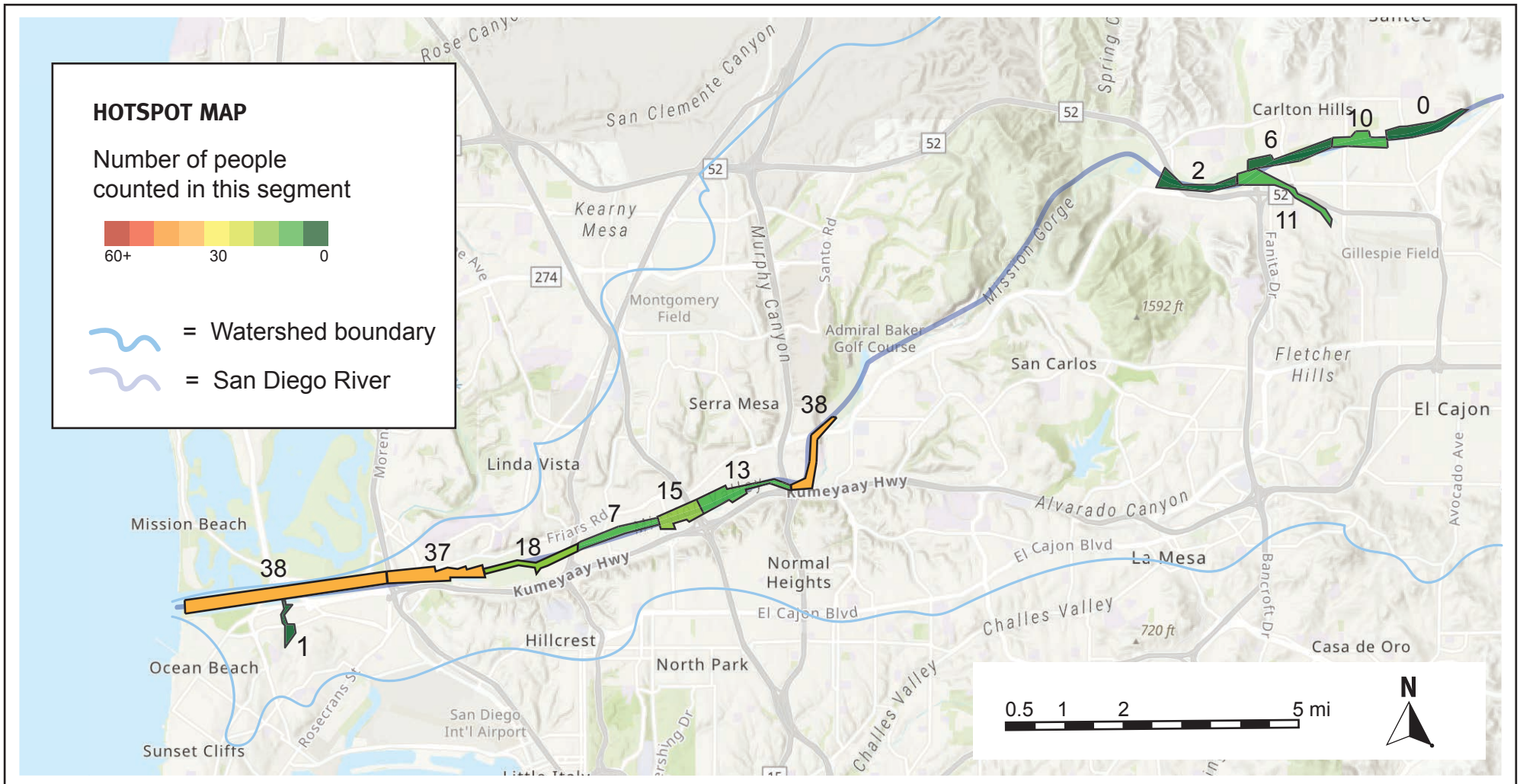
Learn more: sandiegoriver.org/discover/homelessness/

HOMELESSNESS CENSUS

The San Diego River Park Foundation coordinates volunteers to document people experiencing homelessness in the San Diego Riverbed. During the spring census, SDRPF volunteers conducted field surveys on foot in the early morning hours on April 10-11, 2026 in the segments below. Volunteers were trained to document hand-built structures, individuals, and inhabited vehicles. The below numbers report only inhabited vehicles parked within naturalized areas, not adjacent paved parking lots or streets. These are the results:

	Hand-Built Structures	Individuals	Inhabited Vehicles	Estimated* Total People
City of San Diego: standard areas	70	22	12	169
City of Santee: standard areas	11	7	0	26
TOTAL	81	29	12	195

**based on Regional Task Force on Homelessness multipliers (2018): x1.75 for hand-built structures and x2.03 for inhabited vehicles*



TRENDS OVER TIME

Total people experiencing homelessness in the San Diego Riverbed by shelter type (trend analysis excludes canyons because surveys there started in 2021)

